

Connecting Student Learning to Historic Preservation REACH Enhances College Experience



REACH

Researching Early Arkansas
Cultural Heritage

Dr. Jan Ziegler
janz@blackrivertech.edu
VP for Development
Black River Technical College

REACH:

Researching Early Arkansas Cultural Heritage



Theory and Application
Extend Classroom into Community
Apply Learning in New Settings
Learning and Skills are Connected, not Discrete
Information

CONNECTIONS





© 2005 MapWatch.com

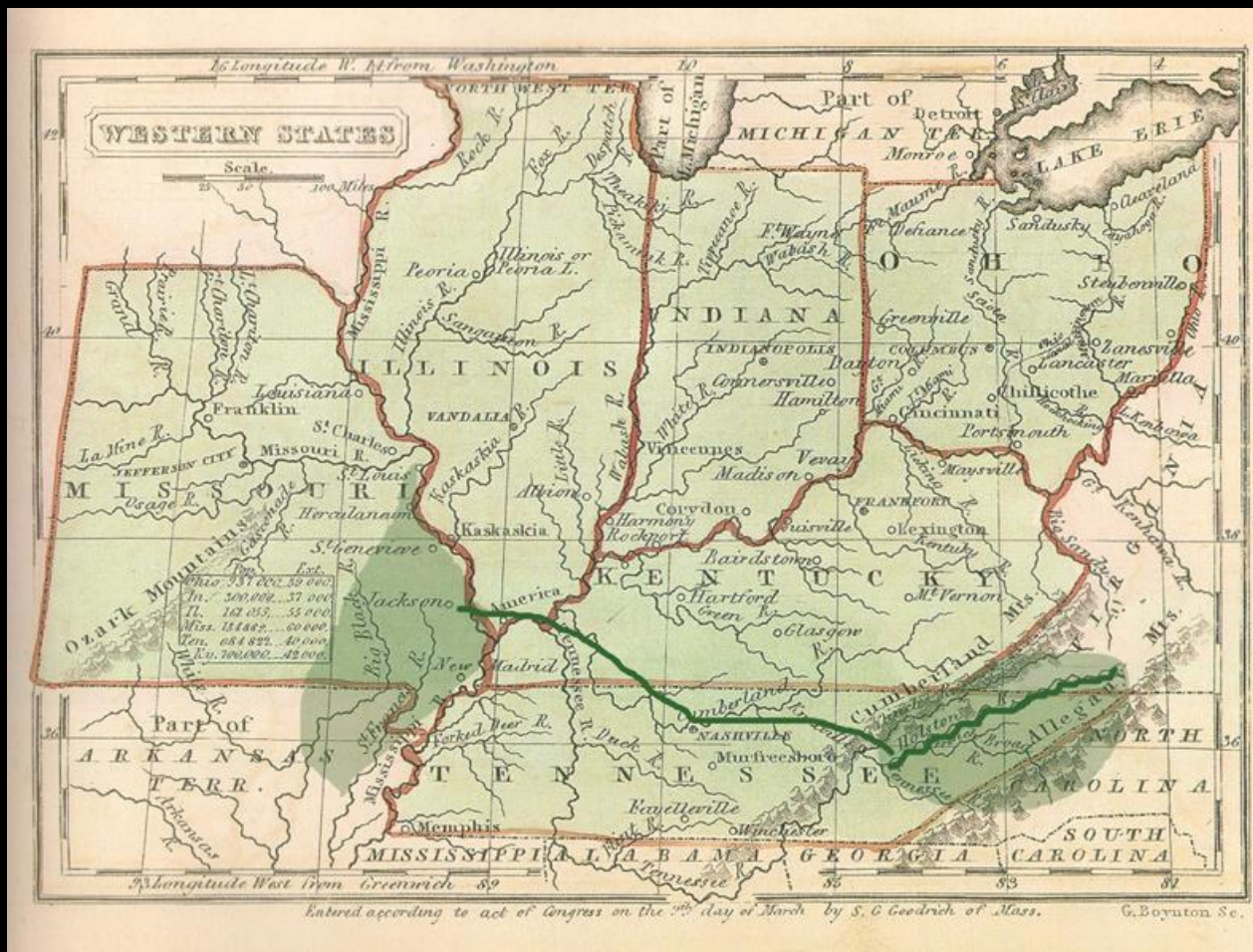








Trans-Mississippi West





The Structures

Rice-Upshaw House

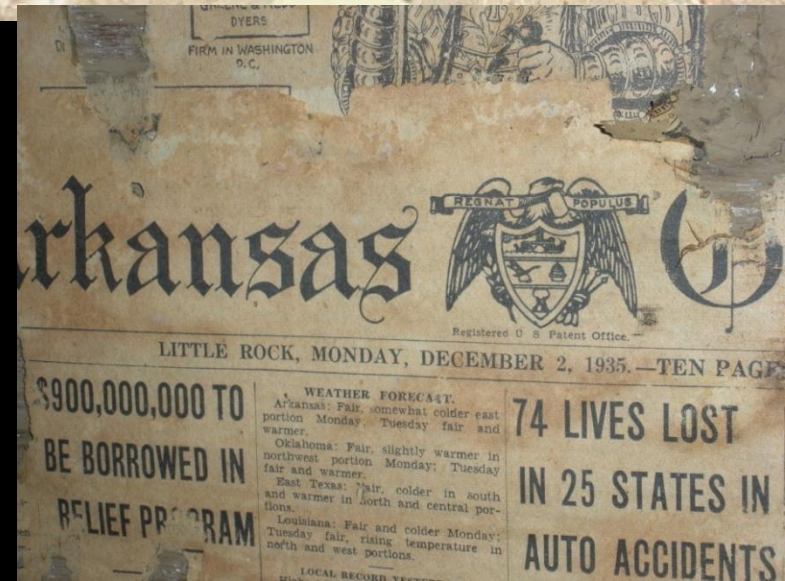
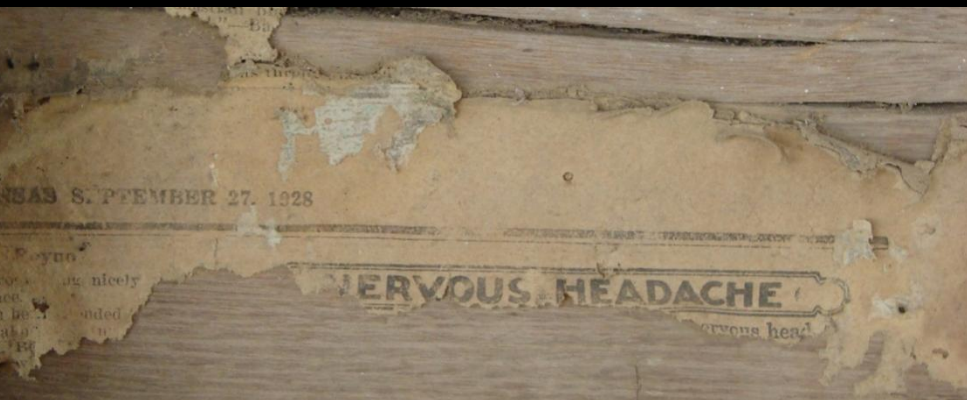
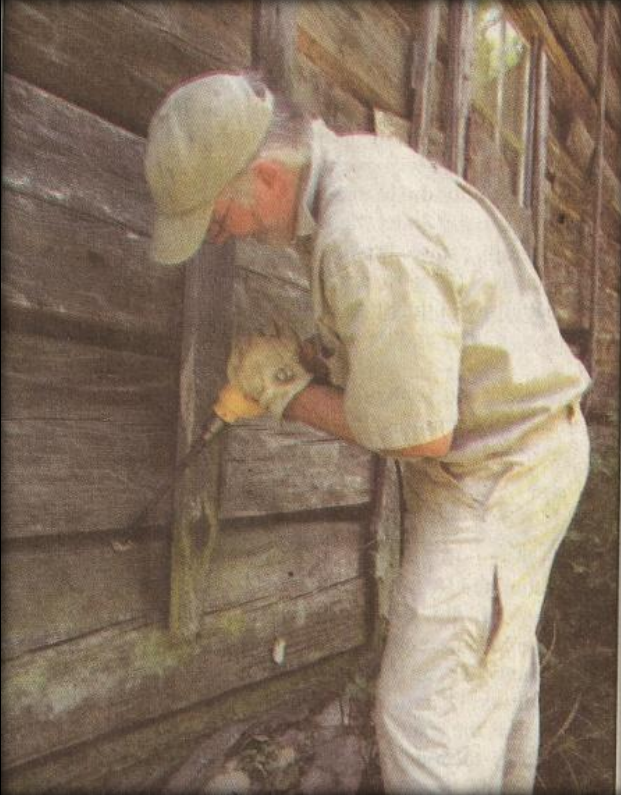


William Looney Tavern



East Arkansas Settlement Study







“When I first heard about the study, I did not understand what could be so interesting. They are just old houses, on the side of the road, in the middle of a field, and on a riverbank. But...stories of the early settlers...brought life into the old homes before me.

The highway before me became a trail...The settlers...traveled hundreds of miles by trails, on horseback, by foot, and in wagon trains. They overcame many obstacles, faced many hardships, and survived...



***“The homes now stand
alone, quiet on the
stone foundations. ..
Now I see them as
pieces of a puzzle,***

***pieces that have been essential in shaping
our community. They are beckoning us to
dig deeper into their past
and give them a solid place
in... history.”***

***Twyla Evans,
Freshman English I Student***



Researching Early Arkansas Cultural Heritage

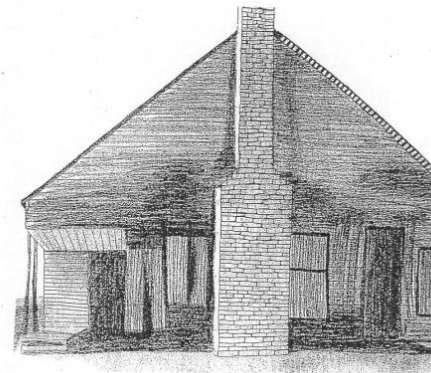
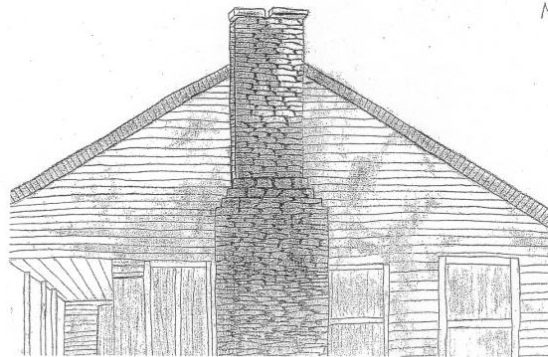
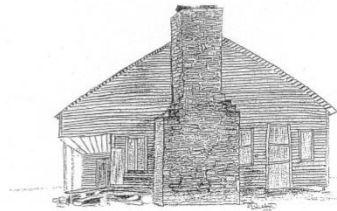
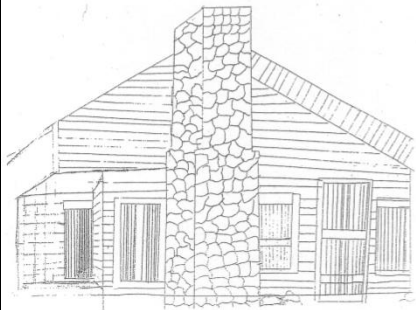
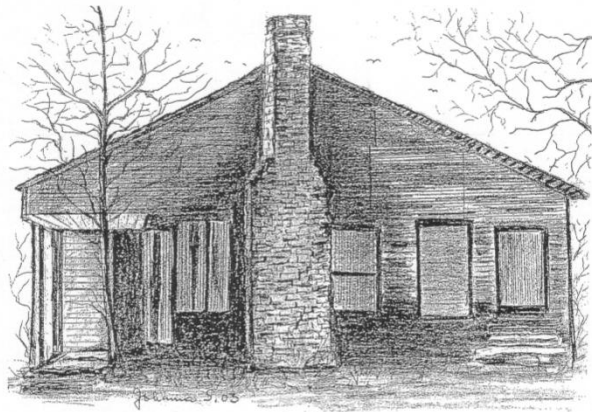
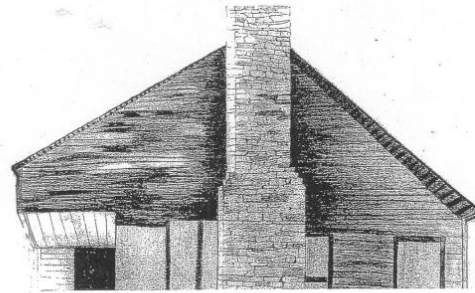
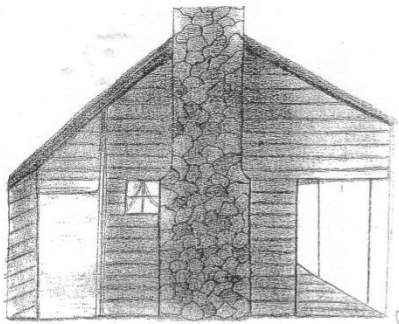


Master Plan

*on the
Eleven Point River*

ARKANSAS

Black River Technical College
Pocahontas, Arkansas



William Looney

- Early 1800s arrival
- Accompanied by enslaved African Americans
- Justice of the Peace
- Regional financier
- Distiller of apple brandy
- Inn/Tavern

of the County of Randolph deceased, as the same come
to the hands of Asa Loomis & Co. Executors of all and singular the goods and chattels
rights and credits, of said Asa Loomis deceased: Witness
this 25th day of June 1846.

Robert	a Negro Man	aged about 50 Years
Rose	a S. Woman	" " 45 Yr
Hyam	" S. man	" " 29 Yr
Albert	" S. S. "	" " 22
Ann	" S. Woman	" " 18
Matthew	S. Man	" " 15
Perissa	S. Girl	" " 13
Emily	S. S. "	" " 12
John	S. Boy	" " 10
Joseph	S. S. "	" " 8
Eliza	S. Girl	" " 6
Franka	S. S. "	" " 4
Henry	S. Boy	" " 3

Reuben Rice

- 1812 Arrival in Eleven Point River Valley
- Well known merchant
- Illiterate but visionary
- County Commissioner

East Arkansas Settlement Study

- Age of structures confirmed
 - Rice-Upshaw 1828
 - William Looney Tavern 1833
- Classroom skills
 - Can be linked
 - Positive student engagement

Development of REACH

- Restoration would require grant
- Arkansas Natural and Cultural Resources Council (ANCRC)
 - Historic
 - Architectural
 - Archeological

Ownership by BRTC Required









Contingent upon grant, restoration

DONATION AND ACCEPTANCE



\$194,000 Stabilization of Rice-Upshaw House

2006



\$575,000

Restoration of

Rice-Upshaw House

2007



\$500,000 Restoration of William Looney Tavern

2008



**Site Enhancements,
Outbuildings, Pavilion,
Tavern Completion
\$500,000
2009**





\$1.7 Million

2011 ANCRC Grant Application: Public Visitation

- \$475,000 Request
- Pavilion at William Looney Tavern
- Historic Fencing
- Interpretive Master Plan
- Digital Interpretive Materials



Upcoming Plans

- October 2011 Major Public Event
- Public Visitation
- Expanded student engagement
- Digital interpretation
- Occasional special interpretive events



Rice-Upshaw House



William Looney Tavern



Rice-Upshaw House Celebration and Family Dedication



William Looney Tavern Celebration and Family Dedication



Cost vs. Value

- Historic
- Architectural
- Archeological
- Craftsmen skilled in preservation trades



2007-2009

Drawing by Jessica Hausman, Art Student

RESTORATION OF THE RICE-UPSHAW HOUSE







































2009-2011

RESTORATION OF THE WILLIAM LOONEY TAVERN





































Rice-Upshaw House

- Honorable Mention:
- “Excellence Through Restoration” 2009



Historic Preservation Alliance
of Arkansas

William Looney Tavern

“Outstanding Work
By a Craftsperson” 2011



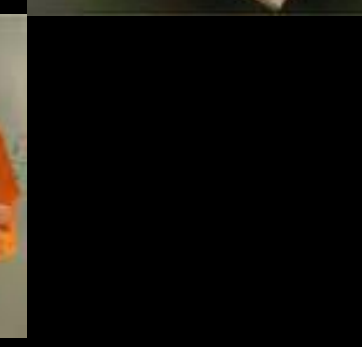
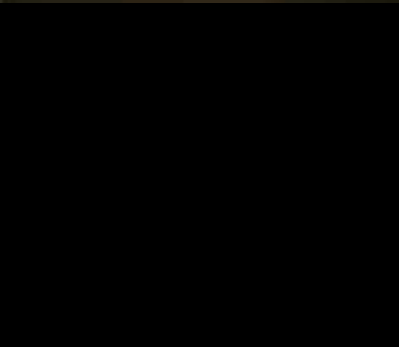
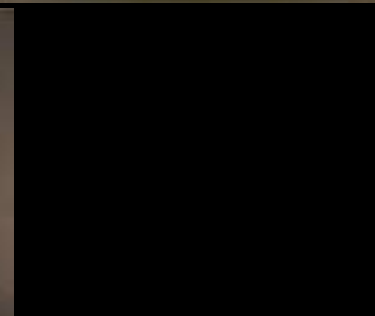
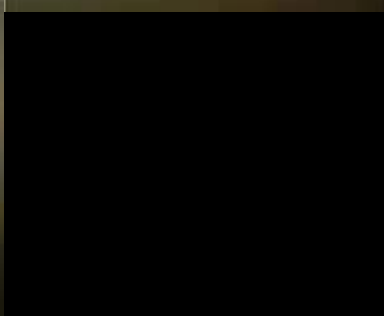
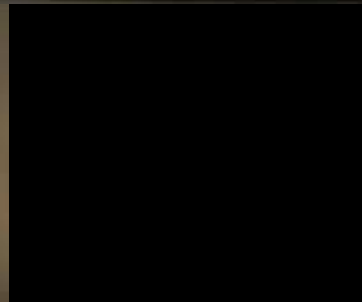
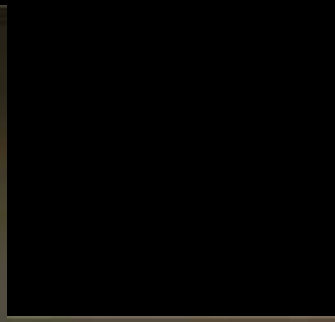
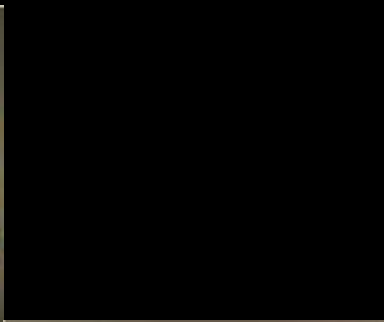
Historic Preservation Alliance
of Arkansas

DISCOVERIES

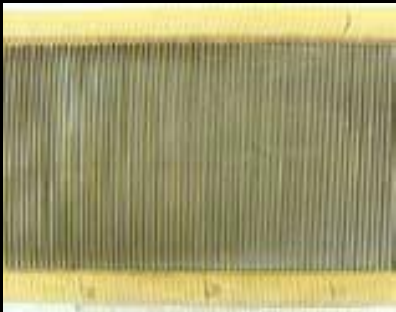




















What is the worth of history?

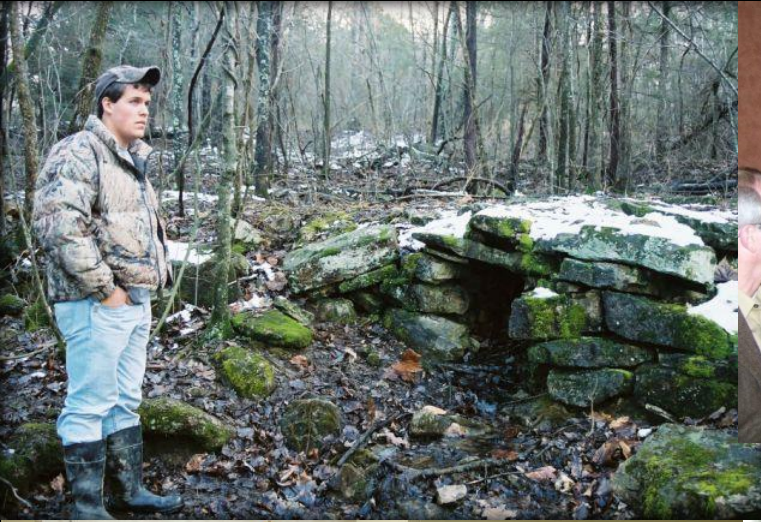


Making Connections

- English
 - Art
 - Community Heritage
 - Machine Shop
 - Music
 - Nursing
 - Chemistry
- Government
 - Criminal Justice
 - Welding
 - Desktop Publishing

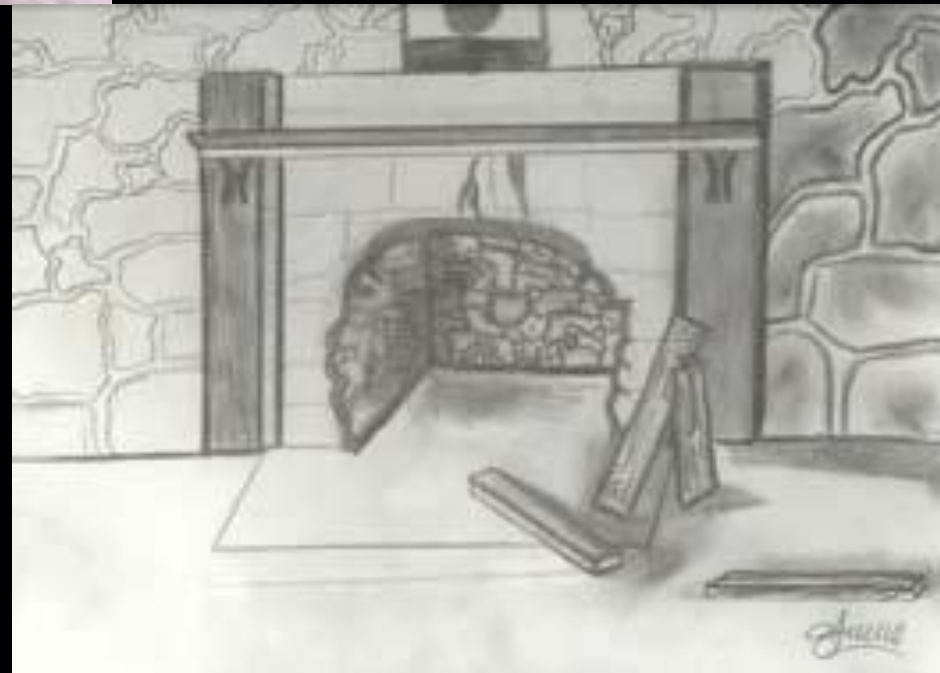


Student Connections





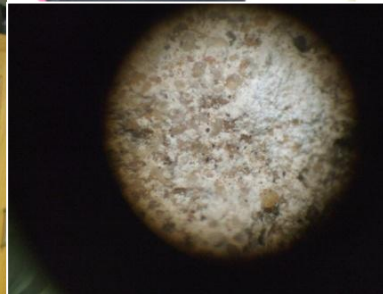
Student Jamie Taber
sketches fireplace
at unrestored
Rice-Upshaw
site



BRTC Students Sketch Rice-Upshaw House









BRTC Students at UA Fayetteville



Dr. David Stahle. Director,
Dendrochronology Laboratory



BRTC Students at UA Museum Archive





BRTC Students at UA Archive

Rick Parker, AIC, Parker Conservators, Inc



BRTC Students View REACH Artifacts at Arkansas Archeological Survey

Aden Jenkins, AAS



Descendants of Reuben Rice



Christina French, Donor
William Looney Tavern







Historic Architect Tommy Jameson, AIA (left)
Randy Dennis, ANCRC Director



Joan Gould, Historic Preservationist (left)
ANCRC Members

REACH as Educational Setting



BRTC Faculty Tour Rice Upshaw House





BRTC Faculty Fall 2009
William Looney Tavern



BRTC Faculty Fall 2010
Rice Upshaw House



BRTC Faculty Visit Fall 2010
William Looney Tavern



BRTC Construction Manager discusses Early Arkansas Experiences of African Americans with Historian Ronnie Nichols





Requests for Visits

- May 2011
- June 2011
- “Juneteenth Celebration”
- Gifted/Talented Instructors
- Pocahontas Public Schools
- African American descendants of former slaves of William Looney family

Other institutions of higher education

- Dissertation Studies
 - Distilleries
 - Non-Plantation Enslavement
- Heritage Studies Programs



- * Theory and Application
- * Extend Classroom into Community
- * Apply Learning in New Settings
- * Classroom Learning and Skills are Connected,
not Pieces of Discrete Information



CONNECTIONS



References

- Caine, Renate, and Geoffrey. 1994. *Making Connections: Teaching and the Human Brain*. Dale Seymour Pub.
- Center for Community College Engagement. 2010. The Heart of Student Success. Austin, Texas: University of Austin at Texas Leadership Program.
<http://www.ccsse.org>.
- Lumina Foundation. 2005. Paths to persistence.
<http://www.luminafoundation.org/publications/>.
- Tinto, Vince. 2003. Taking Student Learning Seriously: Rethinking the University of the Future.
<http://www.faculty.soe.syr.edu/vtinto/index>.